

ALDEC ver 5029 update Guide .

Please be informed that in order to complete this ALDEC ver 5029 update , it is necessary to download two separate files.

1. Change config to 4.6.zip
2. ALDEC Updater 5029.exe

1.Change config to 4.6

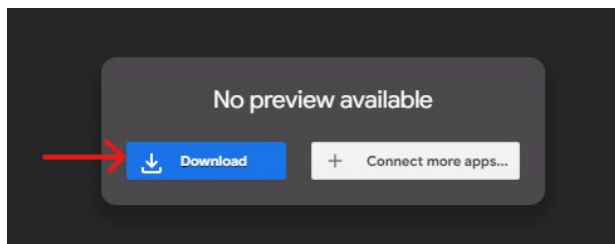
Download Change config to 4.6 from below URL

https://drive.google.com/file/d/1PjstvBSCxg04mnt76CZzDkNGDZqq1RaZJ/view?usp=share_link

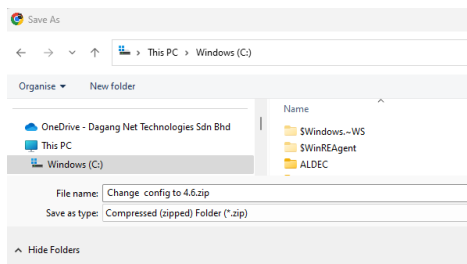
Step 1

- A. Click link to download **Change config to 4.6.zip**
- B. Save **Change config to 4.6.zip** into your PC any directory (Example in your **Desktop** or **Download folder**)

A.




B.



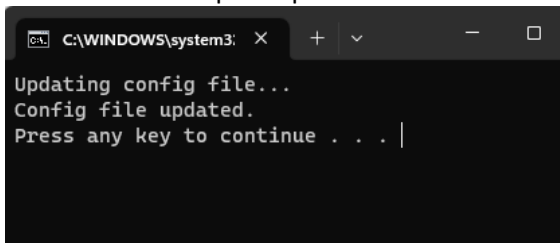
Step 2

Run the "Change config to 4.6.bat" file to update the configuration file.

Name

 change config to 4.6.bat

Once this screen appear, the first stage of the update process is finished. Please proceed with the ALDEC ver 5029 update process.



```
C:\WINDOWS\system32: x + v - □
Updating config file...
Config file updated.
Press any key to continue . . . |
```

2.ALDEC ver 5029

Download ALDEC Updater 5029.exe from below URL

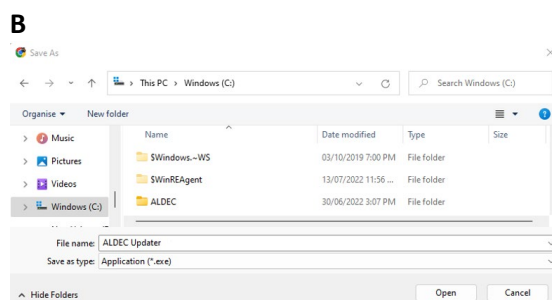
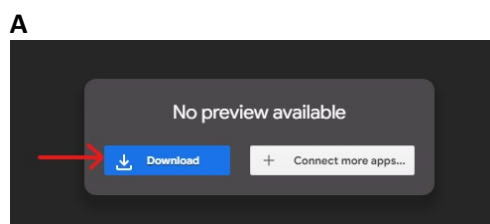
Click one of the link below to start download.

1. https://drive.google.com/file/d/1jFMeQjpKn411e1VrQq0Qy1fbmLWxWaqb/view?usp=share_link
- Or
2. https://drive.google.com/file/d/1LuFYG78c9-zZhHbxz937GwMOgD4KKDPj/view?usp=share_link

Remember to close All ALDEC application before run it

Step 3

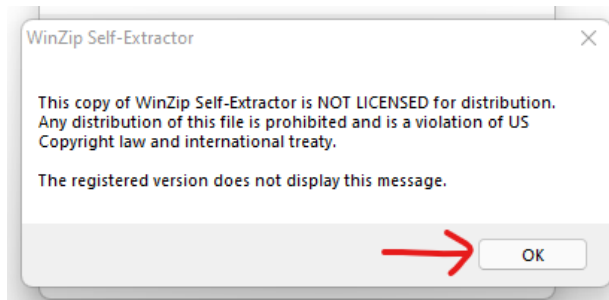
- A. Click on the link to download ALDEC updater, click **Download** to proceed next step
- B. Save ALDEC updater into your PC any directory (Example in your **Desktop** or **Download folder**)



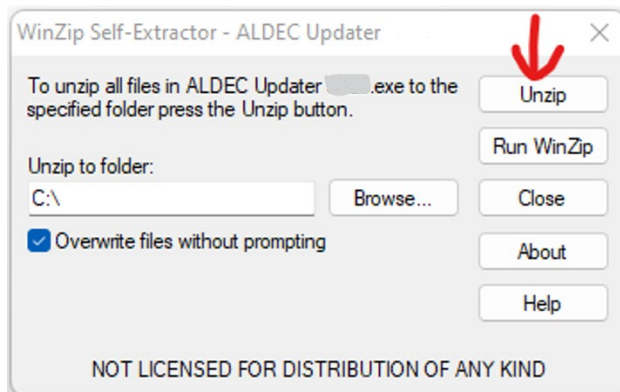
Step 4

- Execute **ALDEC Updater xxxx.exe**. Click **OK** to accept agreement.
- Click on **Unzip** to start auto extract (Default ALDEC folder must be in C:\ALDEC)
- Successfully extract in to C:\ALDEC will prompt the message xx file(s) unzipped successfully.

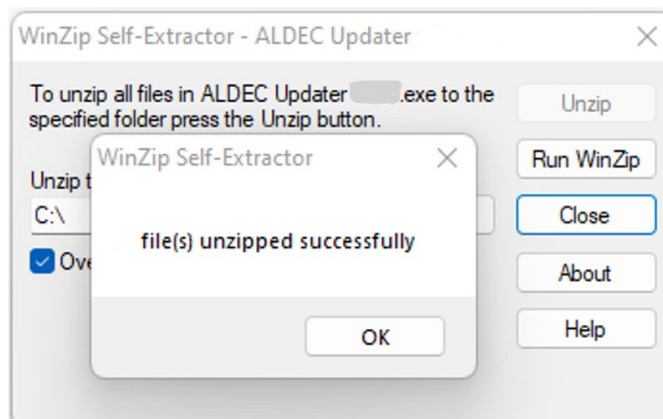
A



B



C



Final Step

You can check **ALDEC ver** on the top **left** or **middle** of **Title Bar**

ALDEC [v]



USER ID

PASSWORD

LOGIN

CANCEL